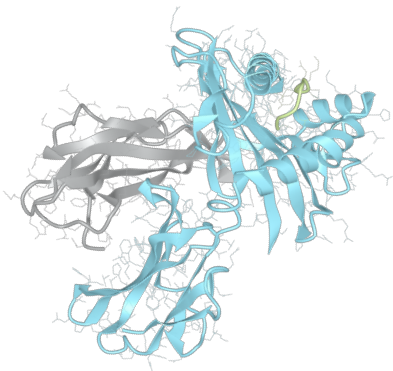


# Product datasheet



## sHLA-A\*66:01bio

A\*6601, A6601, A\*66, A66, A66

|                         |            |
|-------------------------|------------|
| <b>Serological Name</b> | A66        |
| <b>Peptide Load</b>     | Endogenous |
| <b>Modification</b>     | Unmodified |
| <b>Conjugation</b>      | Biotin     |
| <b>SKU</b>              | A6601bio   |

### Product Description

|  |  |
|--|--|
| <b>Allele Name</b>                         | A*66:01<br>B2m   |
| <b>HLA Class</b>                           | HLA Class I  |
| <b>HLA Gene Locus</b>                      | HLA-A  |
| <b>Alternative Allele Name A Chain</b>     | A*6601, A6601, A*66, A66, A66  |
| <b>Alternative Allele Name B Chain</b>     | -  |
| <b>Description</b>                         | Recombinant, truncated Class I soluble Human Leukocyte Antigen (sHLA), naturally folded and glycosylated, loaded with endogenous peptides. |
| <b>Serological Name</b>                    | A66  |
| <b>Serological Split</b>                   | A10  |
| <b>Bw4/Bw6 Assignment</b>                  | -  |
| <b>Bw4/Bw6 Sequence</b>                    | -  |
| <b>Allele Frequency [World Population]</b> |  |
| <b>A chain</b>                             | 1.00%  |
| <b>B chain</b>                             | -  |

### Associated products

[A6601](#)  
[A6601pe](#)

## Product Specification

|                                    |  |
|------------------------------------|--|
| <b>Product name</b>                | HLA-A*66:01bio   |
| <b>HLA Species</b>                 | Human  |
| <b>Host Cell Line Species</b>      | Human  |
| <b>Clone Designation</b>           | F3G11  |
| <b>Tail Specification</b>          | VLDL   |
| <b>Peptide Load</b>                | Endogenous   |
| <b>Modification</b>                | Unmodified   |
| <b>Conjugation</b>                 | Biotin   |
| <b>Complexity</b>                  | Monomer  |
| <b>Protein Format</b>              | Recombinant, truncated, soluble, non-modified, biotinylated, endogenously loaded |
| <b>Storage Temperature</b>         | 4 °C (This product should be stored undiluted)                                   |
| <b>Form</b>                        | Liquid   |
| <b>Concentration</b>               | 300.0 µg/µl  |
| <b>Formulation</b>                 | PBS/0.02% Sodium Azide   |
| <b>pH</b>                          | 7.4  |
| <b>Purification Method</b>         | Affinity Chromatography  |
| <b>Grade</b>                       | Research Use Only [RUO]  |
| <b>Authentication Verification</b> | Sequence Based Typing  |

## Protein Sequences

|                             |  |
|-----------------------------|--|
| <b>Alpha Chain Sequence</b> | GSHSMRYFYT SVSRPGRGEP RFIAVGYVDD TQFVRFSDSA ASQRMEPRAP WIEQEGPEYW<br>DRNTRNVKAQ SQTDRVDLGT LRGYYNQSED GSHTIQRMYG CDVGPDGRFL RGYQQDAYDG<br>KDYIALNEDL RSWTAADMAA QITQRKWETA HEAEQWRAYL EGRCVEWLR R YLENGKETLQ<br>RTDAPKTHMT HHAVSDHEAT LRCWALSFPY AEITLTWQRD GEDQTQDTEL VETRPAGDGT<br>FQKWASVVVP SGQEQRYTCH VQHEGLPKPL TLRVSVSTDD DLA |
| <b>Beta Chain Sequence</b>  | IQRTPKIQVY SRHPAENGKS NFLNCYVSGF HPSDIEVDLL KNGERIEKVE HSDLSFSKDW<br>SFYLLYYTEF TPTEKDEYAC RVNHVTLSPQ KIVKWDRDM  |

## Related Products

[A6602bio](#)  
[A0201bio](#)  
[A0301bio](#)  
[B0702bio](#)

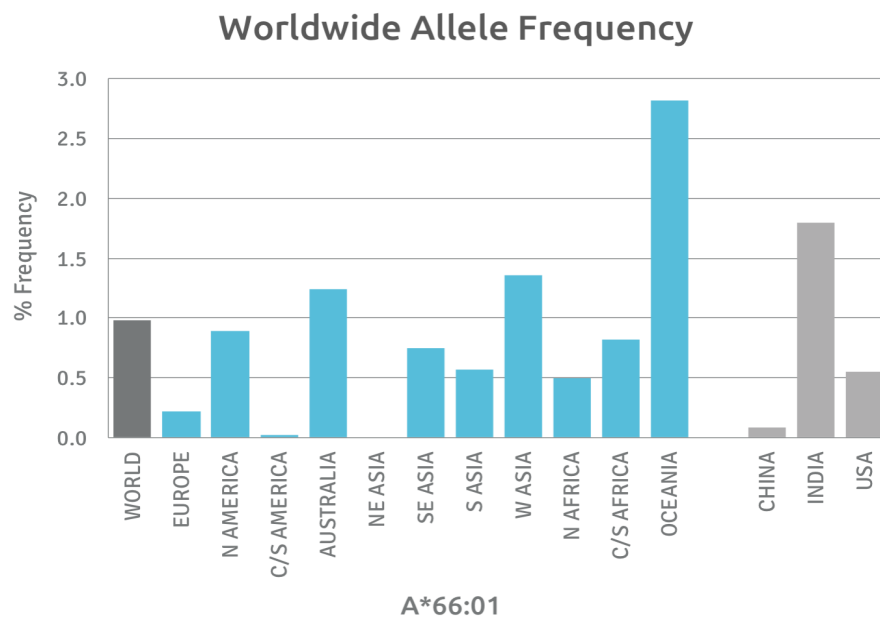
## Applications

HLA Sandwich ELISAs  
HLA Direct ELISAs  
HLA-Sera Antibody Assays  
HLA Controls in ELISA Assays  
HLA Assay Standards  
HLA Blocking Assays  
HLA Neutralizing Assays  
HLA Competition Assays  
HLA Bead Assays  
HLA Immunization Procedures

## Recommended Antibodies

W6/32  
Anti-B2m

## Allele Frequency



Please note:

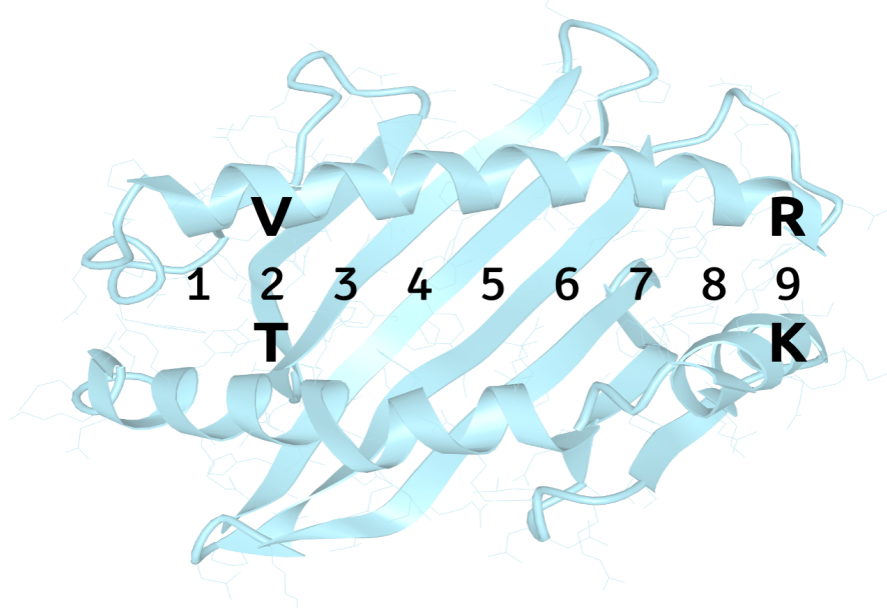
ALL PRODUCTS ARE FOR RESEARCH USE ONLY. NOT FOR COMMERCIAL USE IN DIAGNOSTIC PROCEDURES.  
For more information, please visit our Policies section on our website. For licensing inquiries, please contact

[licensing@hlaprotein.com](mailto:licensing@hlaprotein.com)

 HLA Protein  
PURE PROTEIN, LLC

## Motif

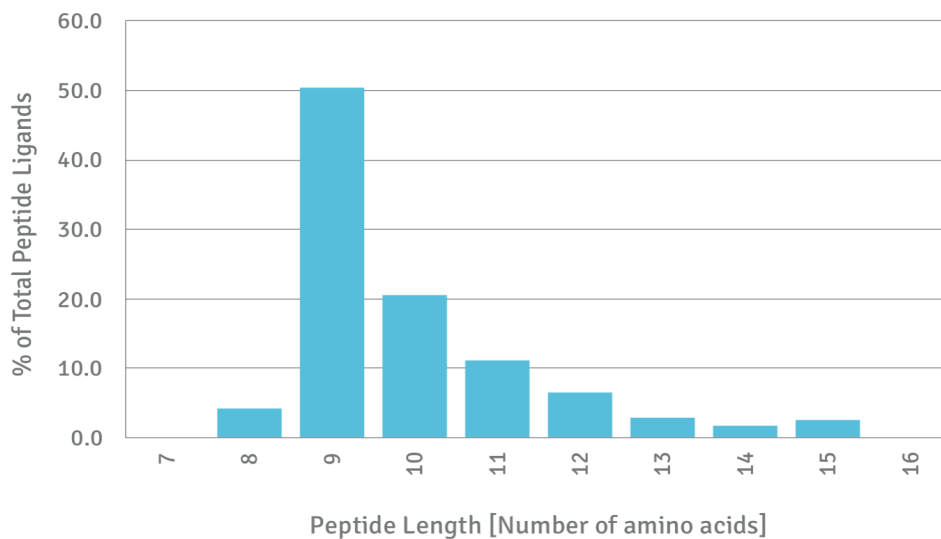
### A\*66:01 BINDING MOTIF



## Length Distribution

### HLA Length Distribution

**A\*66:01**



Please note:

ALL PRODUCTS ARE FOR RESEARCH USE ONLY. NOT FOR COMMERCIAL USE IN DIAGNOSTIC PROCEDURES.

For more information, please visit our Policies section on our website. For licensing inquiries, please contact

[licensing@hlaprotein.com](mailto:licensing@hlaprotein.com)

